

Planning 2.0



# Planning 2.0

*Improving the way we plan together.*

1

Planning 2.0



## Resource Management Plans

- A Resource Management Plan (RMP) is a blueprint that describes how the BLM will manage areas of public land over a period of time.
- Required under The Federal Land Management and Policy Act (FLPMA).
- Developed through a collaborative process.
- Guides future management actions and decisions.

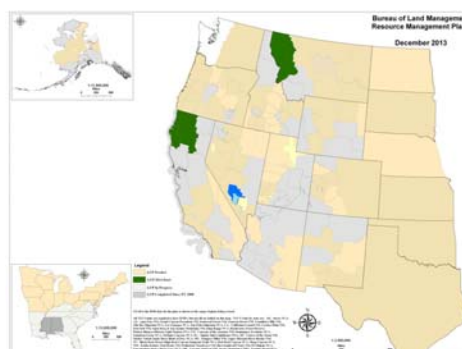
2

Planning 2.0



## Planning Status

- 50+ on-going Resource Management Plans (RMPs) under development.
- Most western states include 6 -10 planning areas.



3

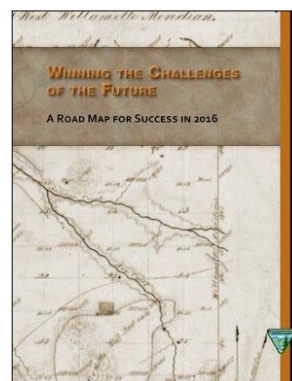
Planning 2.0



## How did this initiative get started?

### ***2016 Roadmap for Success***

Develop a more proactive and nimble approach to planning.



[http://www.blm.gov/wo/st/en/info/directors\\_corner/2016roadmap.html](http://www.blm.gov/wo/st/en/info/directors_corner/2016roadmap.html)

4

Planning 2.0



## Internal Assessment

- Overview of BLMs Current Planning Process
- Litigation review
- Recommendations



5

Planning 2.0



## The Landscape Approach

- Landscape scale assessments
- Regional mitigation strategies
- Monitoring for adaptive management
- Geospatial data integration
- Science integration



*Planning 2.0 will improve our ability to “plan across landscapes”*

6

Planning 2.0



## Project Goals

1. Create a more dynamic and efficient planning process.
2. Enhance opportunities for collaborative planning.
3. Plan across landscapes and at multiple scales.

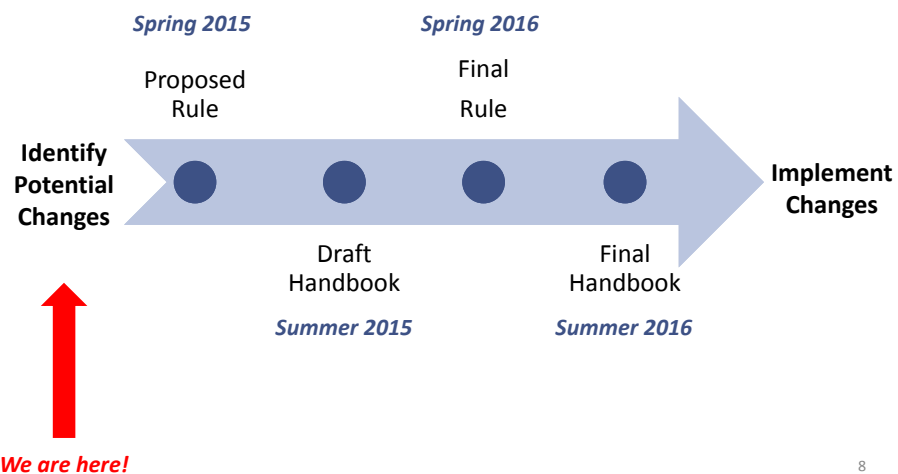


7

Planning 2.0



## Project Steps



8

*Planning 2.0*

## How might we meet these goals?



9

*Planning 2.0*

## Create a more dynamic and efficient planning process

1. Integration of adaptive management into plans.
2. Earlier public and stakeholder collaboration.
3. Improved amendment process.

10

*Planning 2.0*

## **Enhance opportunities for collaborative planning.**

1. New opportunities for public participation and stakeholder collaboration.
2. Improved use of web technology.
3. Continue to actively engage Cooperating Agencies in plan development.

11

*Planning 2.0*

## **Plan across landscapes and at multiple scales**

1. Reconsider boundaries for future plans.
2. Higher-level plans are focused on landscape goals and land use allocations.
3. Emphasis on geospatial data-driven plans.

12

Planning 2.0



## What could this process look like?



13

Planning 2.0

### Conceptual Planning Decision Frameworks



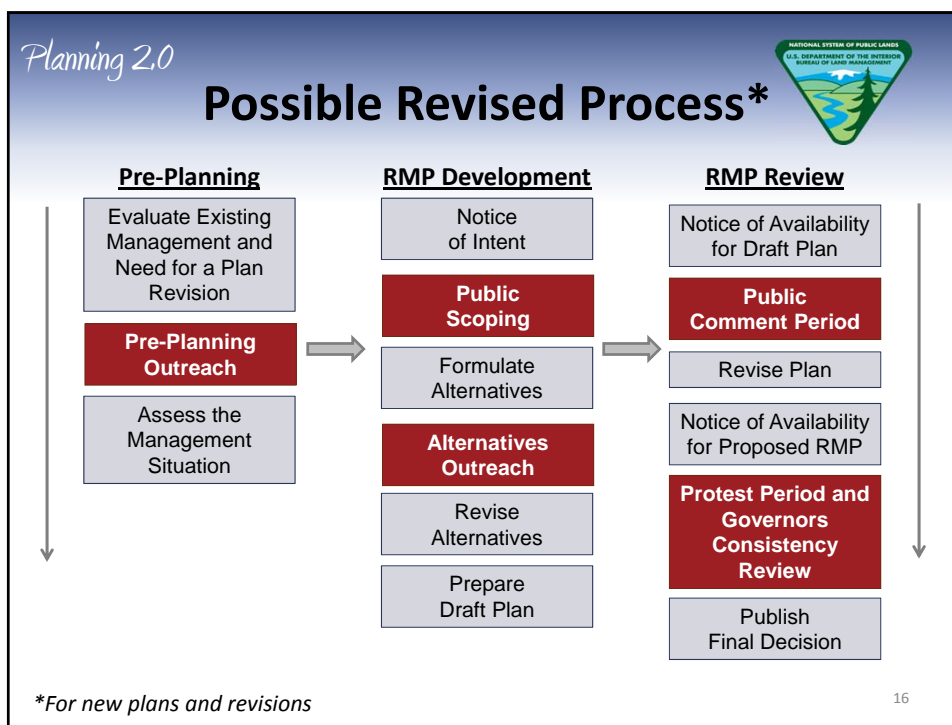
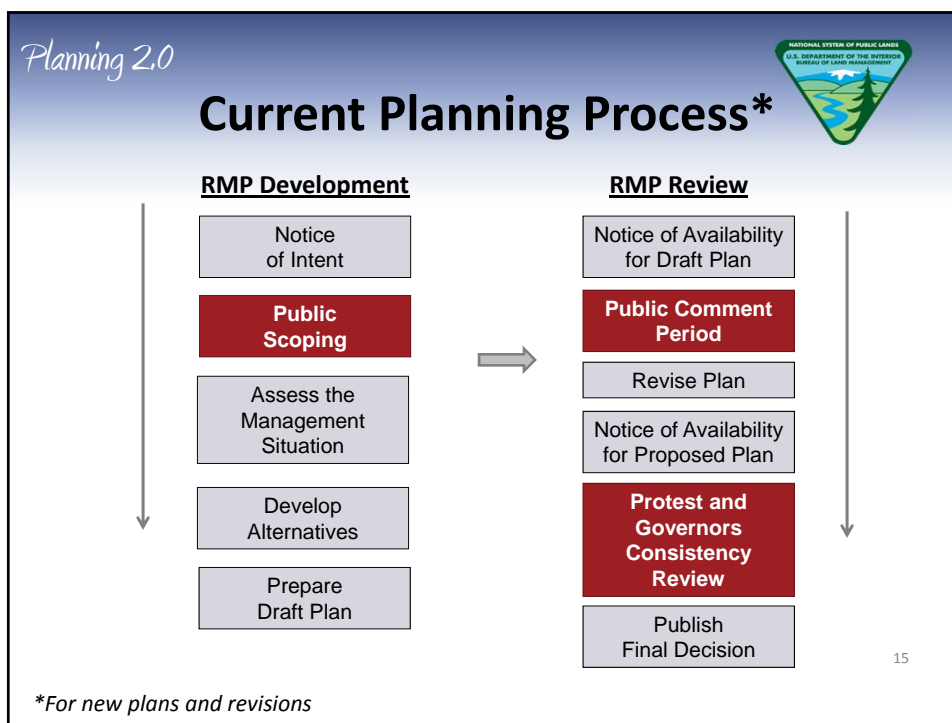
#### Current RMPs Structured by Programs



#### Integrated RMP Landscape Approach



14

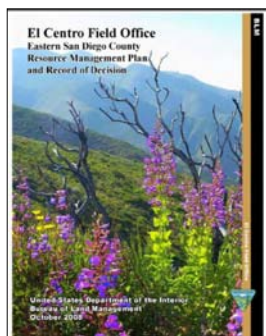


Planning 2.0

## PRE-PLANNING



## BLM evaluates existing management and management concerns.



- *Is existing management working?*
- *Are there resource management concerns?*
- *What is the anticipated scope of the planning effort?*
- *What is the anticipated planning area boundary?*

17

Planning 2.0

## PRE-PLANNING



## Collaborative pre-planning outreach.

- *What resources and multiple uses are important in the planning area?*
- *Where are they important?*
- *What is our long-term vision for the landscape?*
- *Is the planning area boundary and scope of the planning effort appropriate to reach this vision?*
- *What data is available for this planning effort?*



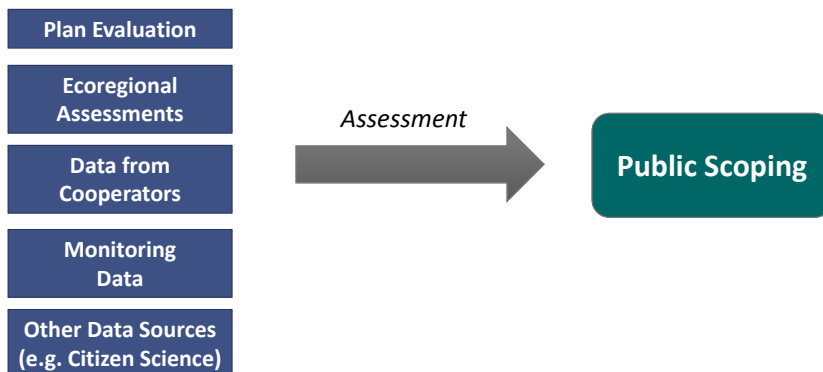
18

Planning 2.0

## PRE-PLANNING



## Data gathering informs scoping.



19

Planning 2.0

## RMP DEVELOPMENT



## Alternatives outreach.

- *Is the range of alternatives complete?*
- *Is any relevant information missing?*
- *Are the goals consistent with each other?*



20

*Planning 2.0*

## How is this approach different?

1. Collaborative pre-planning and alternatives outreach.
2. More focused plans.
3. Landscape-level goals/direction and integrated resource and use objectives.
4. Less prescriptive plans.
5. Adaptive management.

21

*Planning 2.0*

## Questions?



22

*Planning 2.0*

## Questions for Discussion

- Do you have ideas on how the BLM might achieve the project goals?
- What have you seen that worked well in past planning efforts?



23